



FILIERE CON IMBOCCO CORRETTO DIES WITH SPIRAL POINT SCHNEIDEISEN MIT  
 SCHÄLANSCHNITT FILIERES AVEC ENTREE "GUN" TERRAJAS CON ENTRADA CORREGIDA

**FMX 670**  
INOX



60°



**FMFX 680**  
INOX

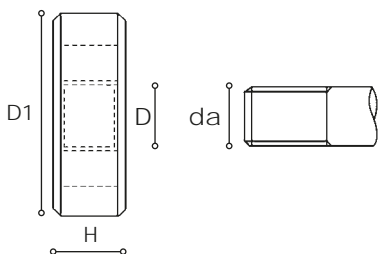


60°



**NEW**  
FMX670

**NEW**  
FMFX680

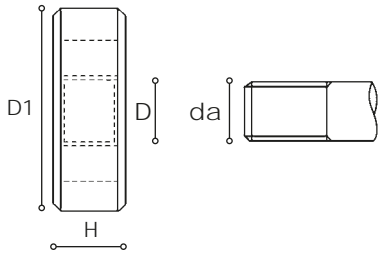


D	da	D1	H	CODE	HSSE 5670..... €	HSSE 5680..... €
3 x 0,5	2,92	20	5	....00003	23,12	
4 x 0,7	3,9	20	5	....00004	23,12	
5 x 0,8	4,9	20	7	....00005	24,53	
6 x 1	5,88	20	7	....00006	24,89	
8 X 1	7,88	25	9	....10008		29,41
8 x 1,25	7,86	25	9	....00008	27,29	
10 x 1	9,88	30	11	....10010		36,52
10 x 1,5	9,85	30	11	....00010	35,01	
12 x 1,25	11,86	38	10	....12512		47,86
12 x 1,5	11,85	38	10	....15012		47,86
12 x 1,75	11,83	38	14	....00012	47,13	
14 x 1,5	13,85	38	10	....15014		48,10
14 x 2	13,82	38	14	....00014	47,13	
16 x 1,5	15,85	45	14	....15016		71,54
16 x 2	15,82	45	18	....00016	70,14	
18 x 1,5	17,85	45	14	....15018		71,54
18 x 2,5	17,79	45	18	....00018	70,14	
20 x 1,5	19,85	45	14	....15020		78,92
20 x 2,5	19,79	45	18	....00020	75,55	
22 x 1,5	21,85	55	16	....15022		119,56
22 x 2,5	21,79	55	22	....00022	115,26	
24 x 1,5	23,85	55	16	....15024		123,48
24 x 3	23,76	55	22	....00024	115,26	
27 x 3	26,76	65	25	....00027	157,21	
30 x 3,5	29,73	65	25	....00030	157,21	

**FGX 622**  
INOX


55°

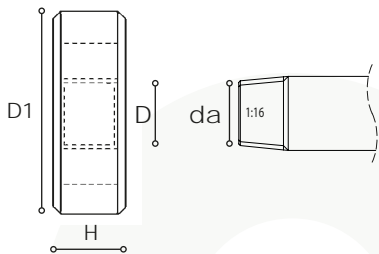
2A

 NEW  
FGX622


D	da	D1	H	CODE	HSSE 5622..... €
G 1/8 - 28	9,73	30	11	....00108	35,26
G 1/4 - 19	13,16	38	10	....00104	43,93
G 3/8 - 19	16,66	45	14	....00308	70,01
G 1/2 - 14	20,96	45	14	....00102	70,01
G 3/4 - 14	26,44	55	16	....00304	110,79
G 1" - 11	33,25	65	18	....00100	162,13

**FNPT 690**


60°

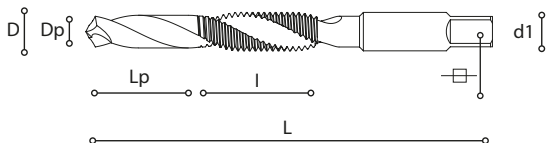
 NEW  
FNPT690


D	da	D1	H	CODE	HSS 5690..... €
NPT 1/8 - 27	9,99	30	11	....00108	43,06
NPT 1/4 - 18	13,26	38	14	....00104	51,87
NPT 3/8 - 18	16,67	45	18	....00308	73,11
NPT 1/2 - 14	20,71	45	18	....00102	73,11
NPT 3/4 - 14	26,03	55	22	....00304	142,19
NPT 1" - 11.1/2	32,59	65	25	....00100	164,53

PM 700



NEW  
PM700



D	DP	Lp	L	l	d1		CODE	HSS 5700..... €	HSS 6700..... € QUARTZ
M 3x0,5	2,5	16	56	11	3	2,4	...00003	29,74	34,83
M 4x0,7	3,3	18	63	14	4	3	...00004	29,74	34,83
M 5x0,8	4,2	20	71	18	5	3,8	...00005	30,85	36,34
M 6x1	5	22	80	22	6	4,9	...00006	33,82	39,98
M 8x1,25	6,8	26	95	25	8	6,2	...00008	34,43	40,90
M 10x1,5	8,5	30	106	31	10	8	...00010	46,07	54,97
M 12x1,75	10,2	32	115	35	12	9	...00012	50,56	60,13

